



T A K E - O F F

The next generation of caravanning has started.



## The best of both worlds

The TakeOff is a new and unique innovation in the world of camping. The design is a cross-over of a traditional touring caravan and a folding trailer, the best of both worlds. The TakeOff is automatically unveiled, with just a few small actions within 30 seconds completely ready for use. Whether it's for a coffee break during a stopover or at the campsite. You decide. TakeOff!



**Ready in 30 seconds!**



## TakeOff with 'train-seat layout'

The TakeOff is equipped as standard with a multi-functional dinette in which the benches are divided into a so-called 1/3 – 2/3 split in longitudinal direction. In no time at all, the handy table can be positioned in the back near the kitchen as well as in the front. With the optional extension to the U-seat group (standard on the TakeOff Xcite), as many as 6 seats can be created. Or, for example, you can enjoy lounging against the front wall with your legs stretched out backwards: relax! Thanks to the multi-functional layout you have access to a king-size bed of 2.05 x 1.60 m for the night.



## TakeOff 'semi-fixed bed layout'

With the new semi-fixed-bed floor plan, a seating area can be quickly created in the daytime to enjoy breakfast together if it is still a bit chilly outside, for example. Just pull the bed back a little on the comfortable slatted frame, lift the new clever table, put the back cushions against the wall and ... done! Under the bed you have a huge luggage compartment that is always easily accessible thanks to the convenient lifting construction with gas springs. As with the TakeOff with its so-called "train seat", the dimensions of the king-size bed of 2.05 x 1.60 m are unique in the world of mobile leisure. Sleeping without worries like at home – that's what we are all about.





### **Kitchen**

The easily removable kitchenette provides you with all the necessities to prepare a delicious meal. Indoor and outdoor.



### **Cool box**

With the built-in and removable cool box, you are always assured of cooled food and drinks.

### **Toilet**

The portable Porta Potti toilet by Thetford in the right-hand bench cabinet is available in a jiffy. Handy at night or when travelling.



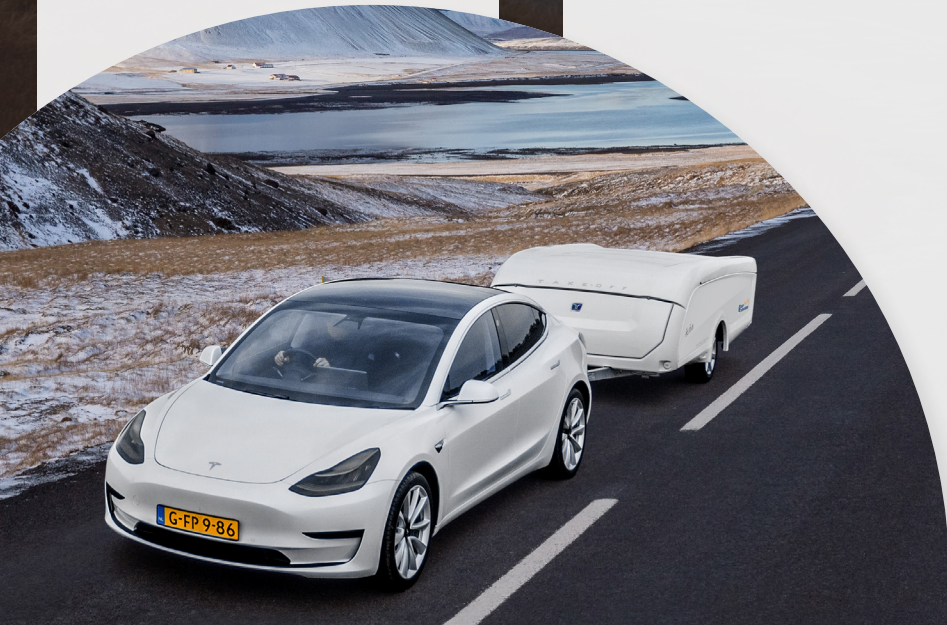
### **Tent/Awning**

The X10T awning is easy to set up and expand into a tent with its simple tailor-made arch frame.



### **Gasbottle compartment and bike carrier**

With the option of a bike carrier on the drawbar, you can easily take your bikes on vacation.



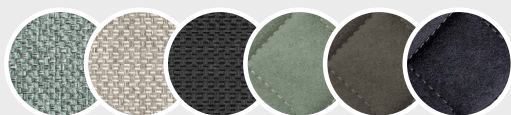
**For equipment levels, check our website.**



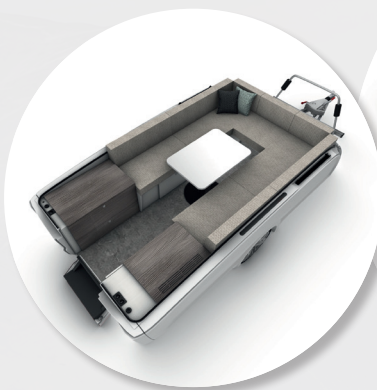
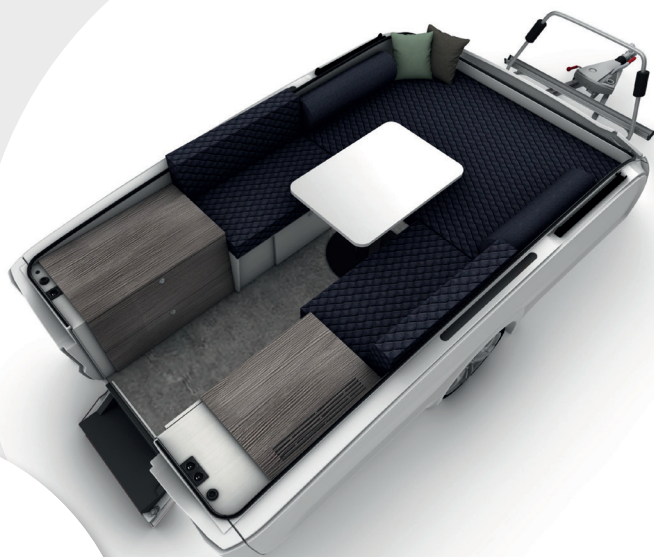
# Interior and exterior model year 2023

## Interior

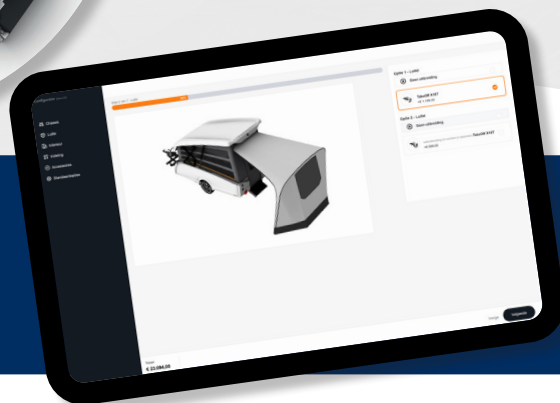
Do you opt for a patterned or plain (luxury microfibre) upholstery? The choice is yours as to how you like your interior to look. Check out all the possibilities on our website.



Azzuro Spiaggia Granito Oliva Taupe Vulcano



Create your own TakeOff at [www.easycaravanning.com/en/configurator](http://www.easycaravanning.com/en/configurator)



## Exterior

The TakeOff Sport and the TakeOff Xcite are each with their own striping, alloy wheels and badges.



T A K E - O F F

The next generation of caravanning has started.



Paganelstraat 12  
7821 AA Emmen  
The Netherlands

+31 (0)591 668 966  
[info@easycaravanning.com](mailto:info@easycaravanning.com)  
[www.easycaravanning.com](http://www.easycaravanning.com)

